

RICH VALLEY TOWNSHIP

Each township has six files containing six sections in each, and one file containing all 36 sections.

RichValley01to06.pdf
RichValley07to12.pdf
RichValley13to18.pdf
RichValley19to24.pdf
RichValley25to30.pdf
RichValley31to36.pdf
RichValleyAll36.pdf

The points are listed starting with the point above the SE corner and continuing in a counter-clockwise rotation around the section. This normally begins with the East point, Northeast, then North, but may also include Witness Corners, and/or Meander Corners.

Definitions

Witness Corner: A witness corner “stands in” when the true corner cannot be monumented or occupied because of difficult terrain or obstruction of the corner sight. The witness corner must be on the section line and is usually 5 or 10 chains away from the true corner.

Meander Corner: The intersection of a township, range, or section line and the banks of a navigable stream or meandering body of water.

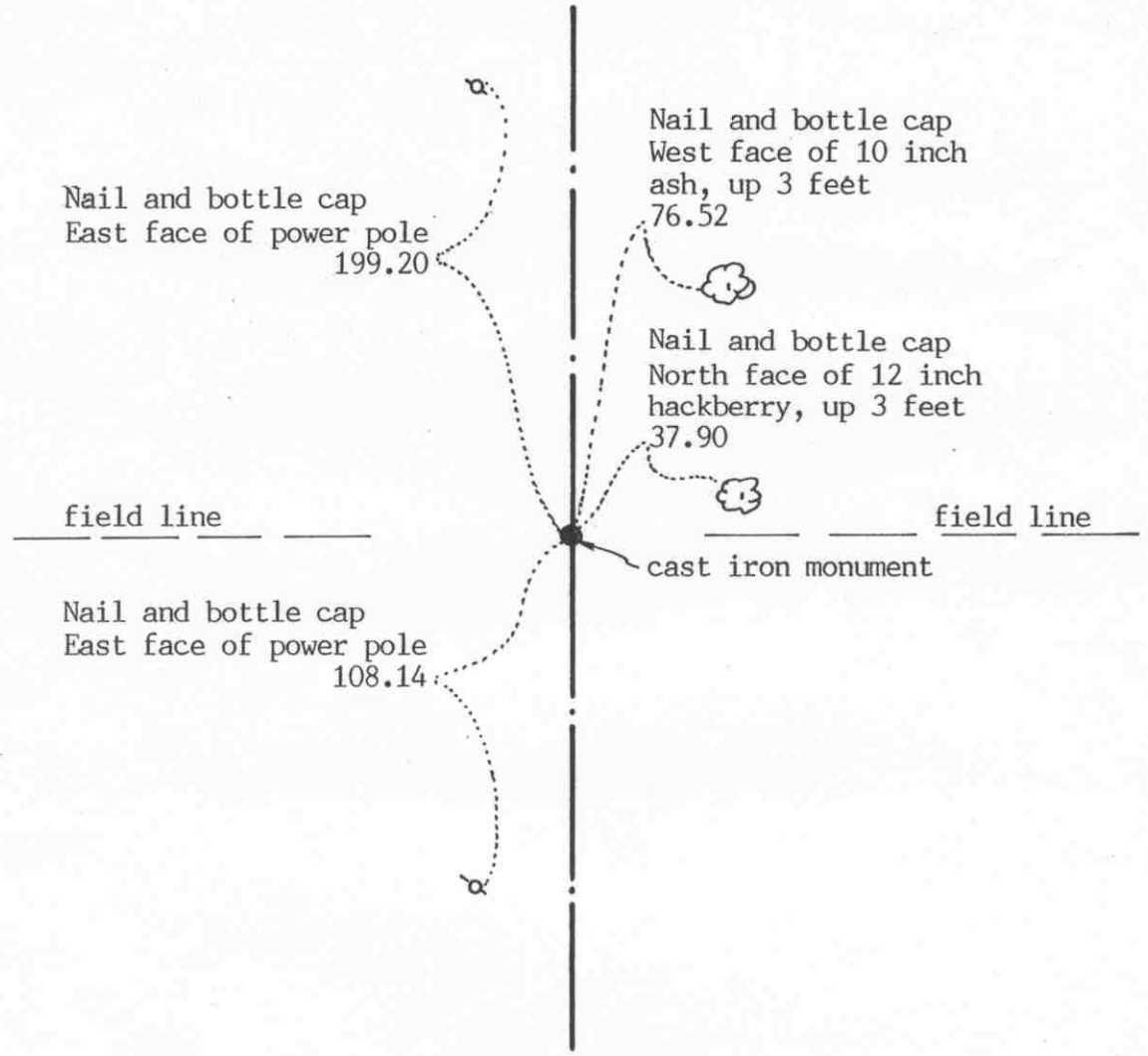
EAST QUARTER corner, Section 7, Township 116 North, Range 28 West

Certificate of Location of Government Corner

SKETCH OF REFERENCE TIES (NO SCALE)

SECTION 7

SECTION 8



Statement of evidence relative to this corner location on sheet 2

I hereby certify that this document was prepared by me or under my direct supervision.

Willard Pellinen

Willard Pellinen
McLeod County Surveyor
License No. 9626

Date Sept. 28, 1993.

OFFICE OF THE COUNTY RECORDER MCLEOD COUNTY, MINNESOTA.

I hereby certify that this document was filed in this office at 9 o'clock A.M. on the 14th day of October, 19 93.

Carmen Estlie Mulder, County Recorder

By _____, Deputy

Document No. 255330

EAST QUARTER corner, Section 7, Township 116 North, Range 28 West

Certificate of Location of Government Corner

September, 1856. D. L. Langton of the General Land Office established this corner. He set a post and marked 2 aspens for bearing trees.

May 8, 1904. E. L. Higgins' field notes show the corner to be on the extension of a fence from the east.

July 26, 1982. We dug for the corner, John Tupa from Hutchinson with a backhoe. Found no evidence of a corner.

August 31, 1982. Effrey Wanous, approximately 80 years old, said the fence running east has never been moved from its original location. His grandfather homesteaded the Southwest Quarter of Section 8. We set a McLeod County cast iron monument on the center line of the north-south road in line with fences east and west, and took available reference ties.

This position is accepted as marking the quarter corner. It fits long standing occupation lines and has been accepted as the quarter corner by adjoining land owners.

September 20, 1993. We found the monument in good condition down 10 inches below the surface of the gravel road and took new reference ties.

NORTHEAST corner, Section 7, Township 116 North, Range 28 West

Certificate of Location of Government Corner

SKETCH OF REFERENCE TIES
(NO SCALE)

SECTION 6

SECTION 5

Nail and bottle cap
SW face of telephone pole.

43.45

Rivet on top of
12 inch CMP

33.30

Punch hole on top of
south end of CMP 37.45

Nail and bottle cap
SE face of guy pole

50.25

cast iron monument

center line of road

Nail and bottle cap
NE face of power pole
44.45

center line of road

SECTION 7

SECTION 8

Statement of evidence relative to this corner location on sheet 2

I hereby certify that this document was prepared by me or under my direct supervision.

Willard Pellinen

Willard Pellinen
McLeod County Surveyor
License No. 9626

Date Sept. 24, 1993

OFFICE OF THE COUNTY RECORDER
MCLEOD COUNTY, MINNESOTA.

I hereby certify that this document was filed in this office at 2 o'clock P. M. on the 5th day of Oct, 1993.

Carmen Helie Mueller, County Recorder

By _____, Deputy

Document No. 255174

NORTHEAST corner, Section 7, Township 116 North, Range 28 West

Certificate of Location of Government Corner

September, 1856. D. L. Langton of the General Land Office established this corner. He set a post and marked four 5 inch aspens for bearing trees.

June 18, 1899. Survey notes by E.L.Higgins, county surveyor show an iron post at this corner. He shows a distance of 2607 feet to the north quarter corner of Section 8.

June 18, 1926. Carlisle Madson, Sr., county surveyor, found an iron bolt and he put in an iron pipe with a brass cap.

June 9, 1939. E. L. Higgins, county surveyor, found the iron pipe set by Madson in wrong location so he moved it $2\frac{1}{2}$ feet south.

May 5, 1972. Dickman Knutson, county surveyor, found the iron pipe with the brass cap and set a McLeod County cast iron monument over it and took available reference ties.

February 23, 1981. We found the monument in good condition and the ties ok.

December 8, 1984. We again found the monument and used it in a survey.

August 10, 1988. We again used the monument in a survey.

Our distance to the north quarter corner of Section 7 is 2661.62 compared with Madson's distance of 2661.6 in 1926. Our distance to the north quarter corner of Section 8 is 2605.86 compared with Higgins' distance of 2607 in 1899.

The monument set by Knutson is accepted as marking the correct location of the section corner. It fits long standing occupation lines and it perpetuates the location of an older monument which was set in 1939 by the county surveyor.

September 20, 1993. We found the monument in good condition and checked the reference ties.

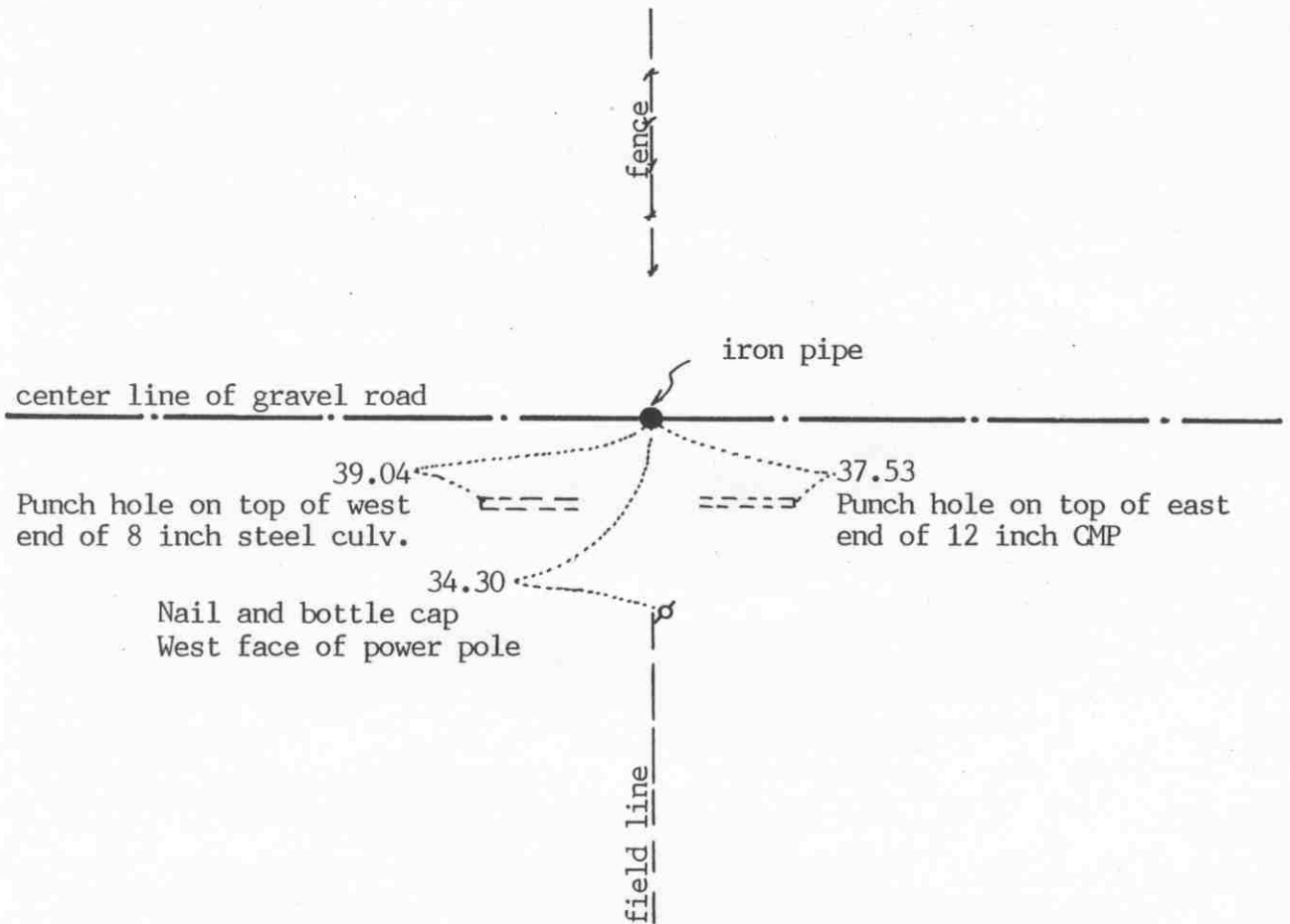
NORTH QUARTER corner, Section 7, Township 116 North, Range 28 West

Certificate of Location of Government Corner

SKETCH OF REFERENCE TIES

(NO SCALE)

SECTION 6



SECTION 7

Statement of evidence relative to this corner location on sheet 2

I hereby certify that this document was prepared by me or under my direct supervision.

Willard Pellinen
Willard Pellinen
McLeod County Surveyor
License No. 9626

Date August 10, 1993

OFFICE OF THE COUNTY RECORDER
MCLEOD COUNTY, MINNESOTA.

I hereby certify that this document was filed in this office at 9 o'clock A. M. on the 18th day of August, 19 93.

Carman Estlin J. Jelder, County Recorder

By _____, Deputy

Document No. 254235

Certificate of Location of Government Corner

September, 1856. D. L. Langton of the General Land Office originally established this corner. He set a post and marked a 5 inch aspen and a 5 inch cherry for bearing trees.

June 18, 1926. Carlisle Madson, Sr., county surveyor, set a a 2 inch iron pipe with a McLeod County brass cap on top.

May 5, 1972. Dickman Knutson, county surveyor, found the iron pipe set by Madson.

December 13, 1972. Knutson took available reference ties to the iron pipe.

February 23, 1981. We found the iron pipe and checked the reference ties.

December 22, 1987. We again found the iron pipe and measured the north line of Section 7. Our distances were within a tenth of a foot of Madson's 1926 distances. We found the corner to be within 0.1 foot east-west and 2.2 feet north of a lost corner position for the corner.

June 17, 1993. We found the 3 inch diameter iron pipe down 2 inches below the surface of the gravel road and took new reference ties.

CERTIFICATE OF LOCATION OF GOVERNMENT CORNER

NORTHEAST Corner of Section 12, Township 116 N, Range 29 W, 5th P.M.

STATE OF MINNESOTA, County of MCLEOD

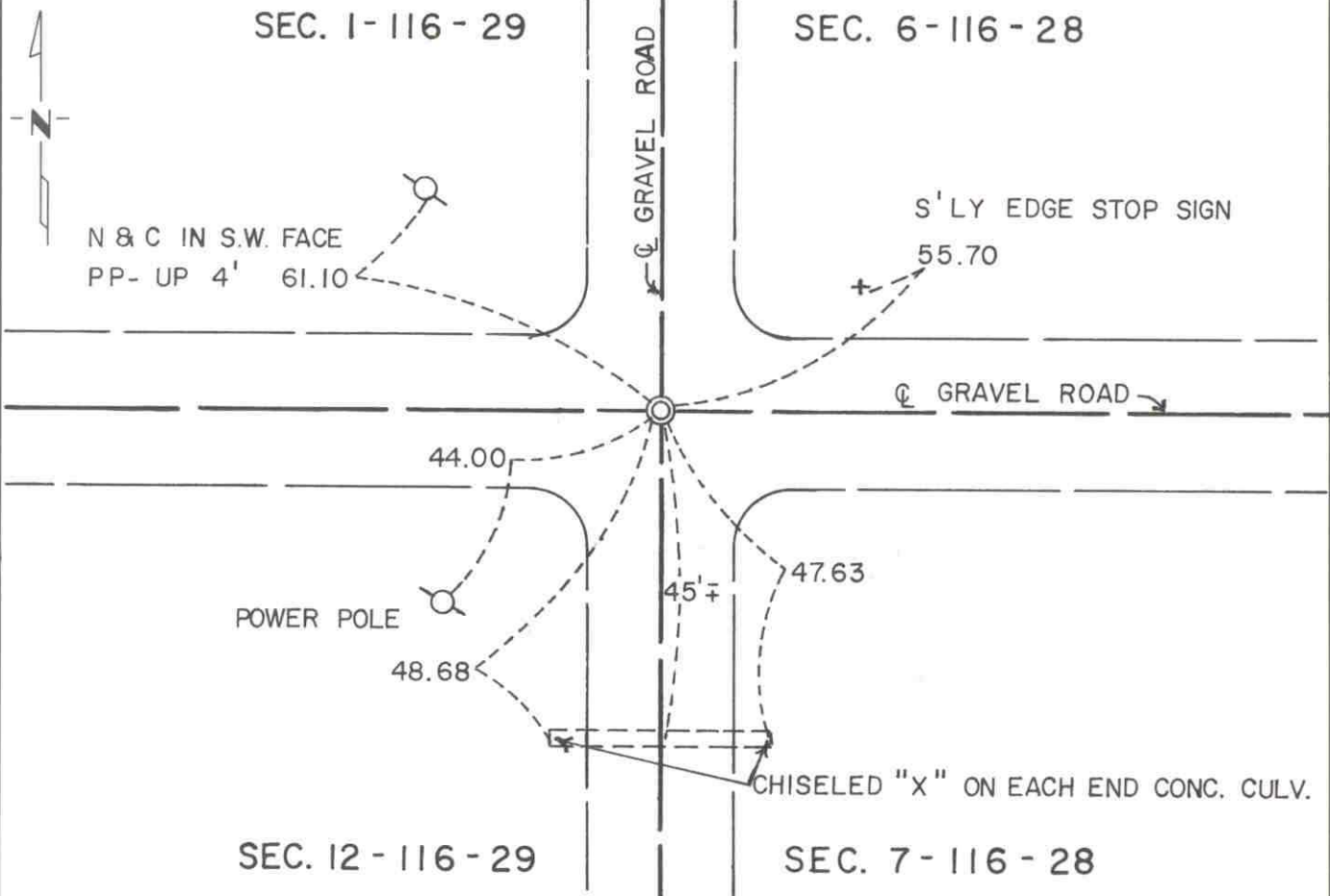
At the corner location shown on the sketch:

On FEB. 1991 found a CAST IRON MONUMENT ABOUT 2" BELOW
THE ROAD SURFACE

left monument as found, lowered monument, removed monument (explain)

On _____ placed a _____
DATE

SKETCH OF REFERENCE TIES



Statement of evidence relative to this corner location is on back of page.

I hereby certify that this document and the data contained herein was prepared by me or under my direct supervision.

Robert Jones 7-22-92
SIGNATURE DATE

Registration No. 11864

Land Surveyor, Professional Engineer
 County Surveyor, County Engineer

OFFICE OF THE COUNTY RECORDER
County of McLeod

I hereby certify that this document was filed in the Co. Recorders office at 9 A. .M. on the 29th day of July, 1992

County Recorder Charlene Estlin

By _____, Deputy

DOCUMENT NO. 246748

- 1855 - The original Public Land Survey of the township line was completed by John Ryan. A wood post was set to mark the corner with reference to two bearing trees.
- 1904 - E. L. Higgins, McLeod County Surveyor, found a stone at the corner.
- 1926 - Carlisle Madson, Sr., McLeod County Surveyor, dug for the corner and found three stones piled on top of each other. He set a 2" diameter iron pipe with a McLeod County brass cap on top to mark the corner.
- 1955 - E. J. Schulz of the Conservation Department found the iron pipe with brass cap about 1.3 feet below the road surface.
- 1970 - Dickman Knutson, McLeod County Surveyor, found the iron pipe with brass cap and set a cast iron monument to replace it. Reference ties were also set. It was located at the intersection of centerlines of a north/south road with an east/west road.
- 1981 - Willard Pellinen, McLeod County Surveyor, found that the cast iron monument set by Knutson had been destroyed during road construction. An iron pipe was set according to Knutson's reference ties and additional reference ties were set.
- 1982 - Willard Pellinen recovered the iron pipe and checked the reference ties.
- 1990 - Willard Pellinen recovered the iron pipe and checked the reference ties.
- 1991 - A Mn/DOT survey crew (Gene East, crew chief) found the iron pipe 2" below the road surface.

The iron pipe is accepted as the corner location because there is a long history of monument perpetuation at this position and it fits long standing occupation lines.

For additional information, contact the Mn/DOT Surveys Section at Willmar, Mn 56201.

Certificate of Location of Government Corner

SKETCH OF REFERENCE TIES

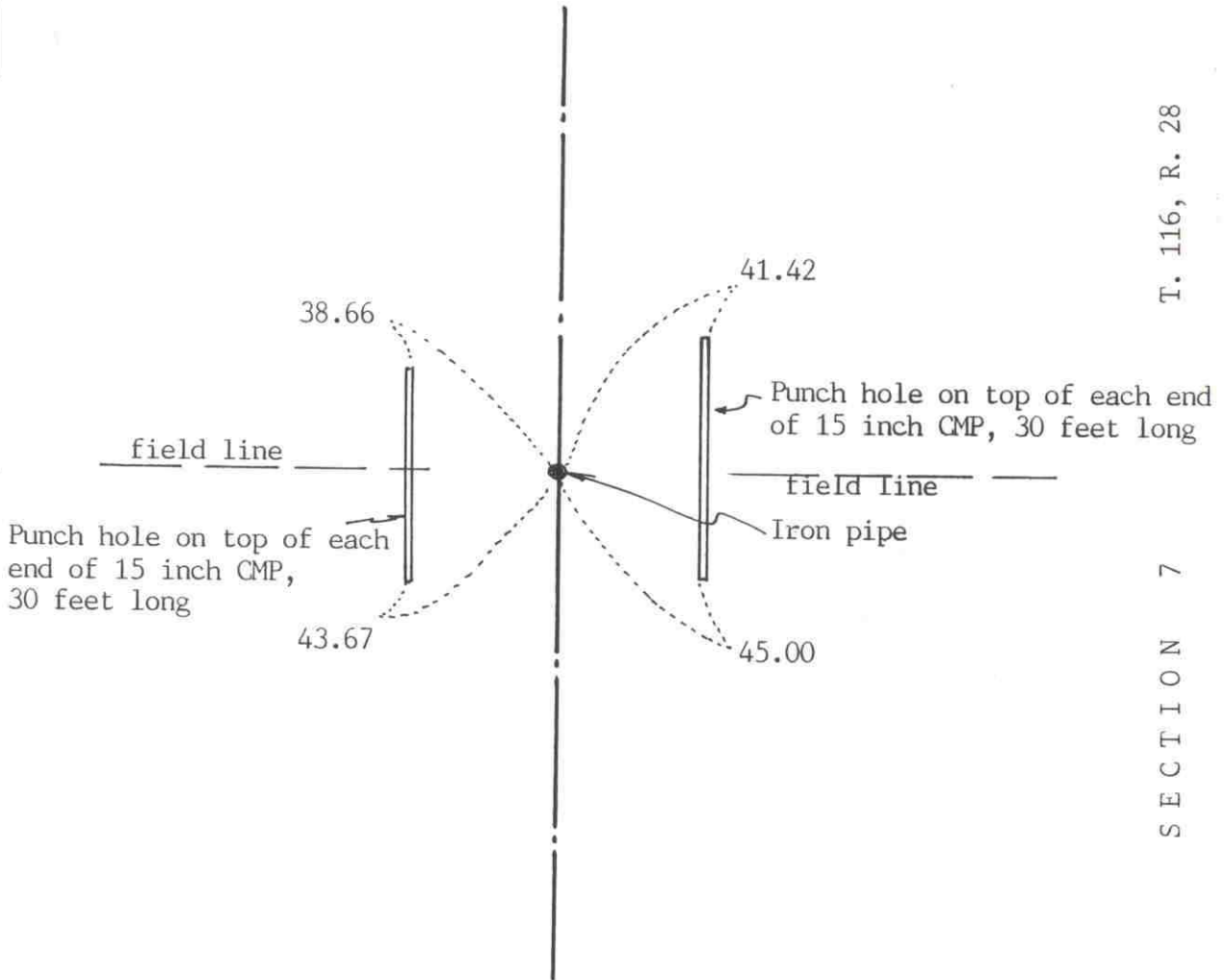
(NO SCALE)



SECTION 12
T. 116, R. 29

T. 116, R. 28

SECTION 7



Statement of evidence relative to this corner location on sheet 2

I hereby certify that this document was prepared by me or under my direct supervision.

OFFICE OF THE COUNTY RECORDER
MCLEOD COUNTY, MINNESOTA.

Willard Pellinen
Willard Pellinen
McLeod County Surveyor
License No. 9626

I hereby certify that this document was filed in this office at 9 o'clock A.M. on the 10th day of July, 1991.

Carmen O'Brien, County Recorder
By _____, Deputy

Date July 6, 1991

Document No. 239853

EAST QUARTER corner, Section 12, Township 116 North, Range 29 West

Certificate of Location of Government Corner

1855. John Ryan of the General Land Office set a post and marked an aspen and an oak for bearing trees.

May 3, 1904. Old county surveyor notes show a stone at the corner, 2686 feet from the northeast corner of the section.

June, 1926. Carlisle Madson, Sr. set an iron pipe with a standard brass cap on top. He set the corner half way between the section corners. Notes don't show if the corner was set on a straight line.

April 16, 1970. McCombs Knutson Associates (Dickman Knutson, county surveyor) dug for the corner and found a 2 inch diameter iron pipe with a McLeod County brass cap on top. Knutson set a McLeod County cast iron monument at the corner and took reference ties.

April 20, 1981. We found the monument, top broken off, down 2 feet below the road surface. We took new ties and set an iron pipe over the monument. We had a distance of 2669.90 feet to the northeast corner and 2670.34 feet to the southeast corner of Section 12, compared with 2671.7 to each corner by Madson in 1926. We found the corner to be 1.2 feet west of a straight line between the section corners.

June 5, 1990. We found no ties remaining. We dug and found the iron pipe down 4 inches below the road surface and took new reference ties.

We accept the monument set by Carlisle Madson and found by Knutson as marking the correct quarter corner.

EAST QUARTER corner, Section 8, Township 116 North, Range 28 West

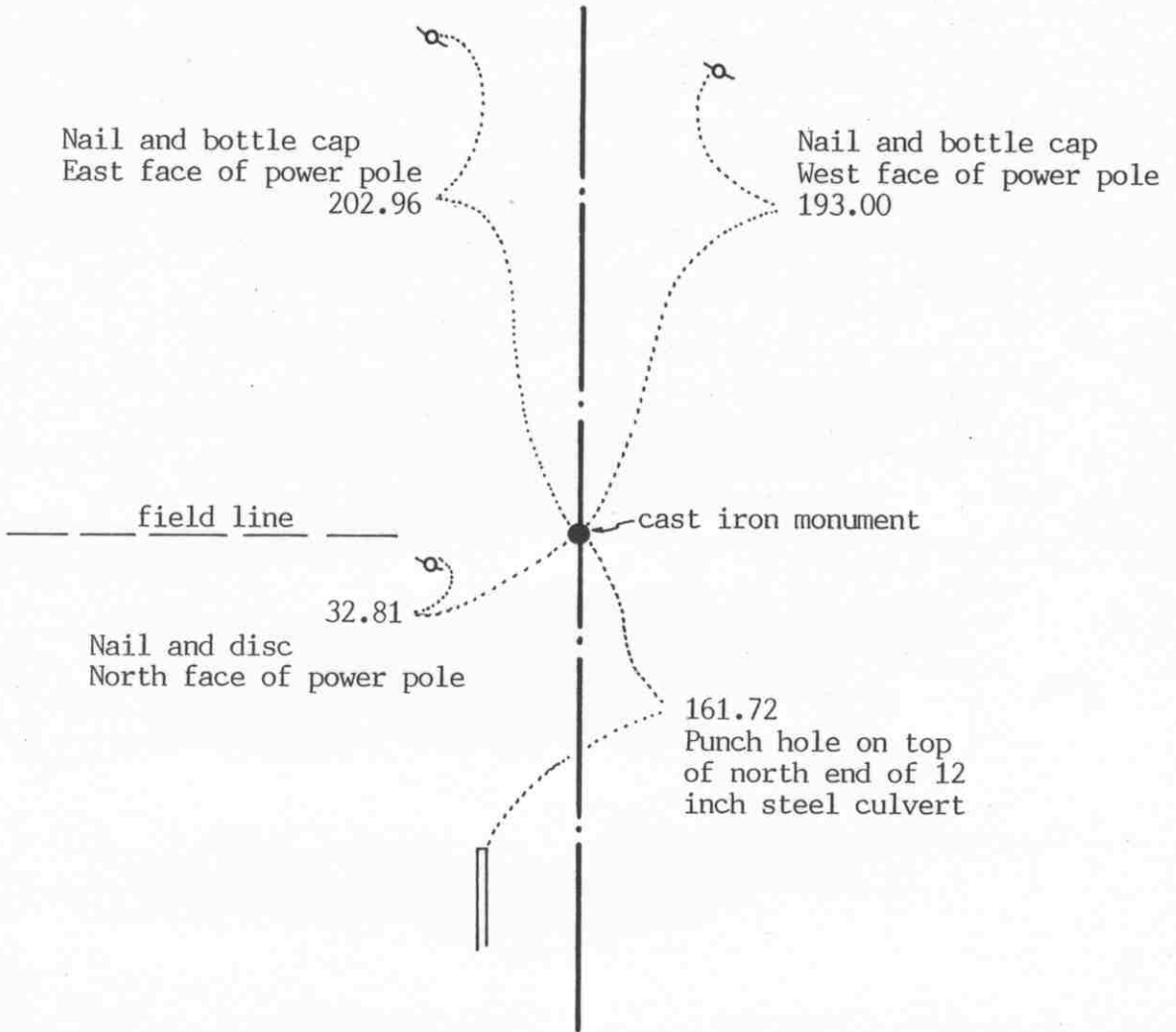
Certificate of Location of Government Corner

SKETCH OF REFERENCE TIES
(NO SCALE)



SECTION 8

SECTION 9



Statement of evidence relative to this corner location on sheet 2

I hereby certify that this document was prepared by me or under my direct supervision.

Willard Pellinen

Willard Pellinen
McLeod County Surveyor
License No. 9626

Date Sept. 29, 1993

OFFICE OF THE COUNTY RECORDER
MCLEOD COUNTY, MINNESOTA.

I hereby certify that this document was filed in this office at 9 o'clock A.M. on the 14th day of October, 1993.

Carmin Helie Mulder, County Recorder

By _____, Deputy

Document No. 255331

Certificate of Location of Government Corner

September, 1856. This corner was established by D. L. Langton of the General Land Office. He set a post in a trench and marked an aspen for a bearing tree.

1904. E. L. Higgins put in a $1\frac{1}{2}$ inch by 3 foot iron at the corner.

June 10, 1977. Dickman Knutson, county surveyor, found the $1\frac{1}{2}$ inch iron, took reference ties and set a $\frac{1}{2}$ inch diameter iron pipe over the found iron.

June 13, 1979. Knutson replaced the iron pipe with a McLeod County cast iron monument.

The monument set by Knutson is accepted as marking the correct location of the quarter corner. It fits long standing occupation lines, the center line of the north-south road and a fence to the west, and it perpetuates the location of an older monument.

September 20, 1993. We found the monument in good condition down 3 inches below the road surface and took new ties.

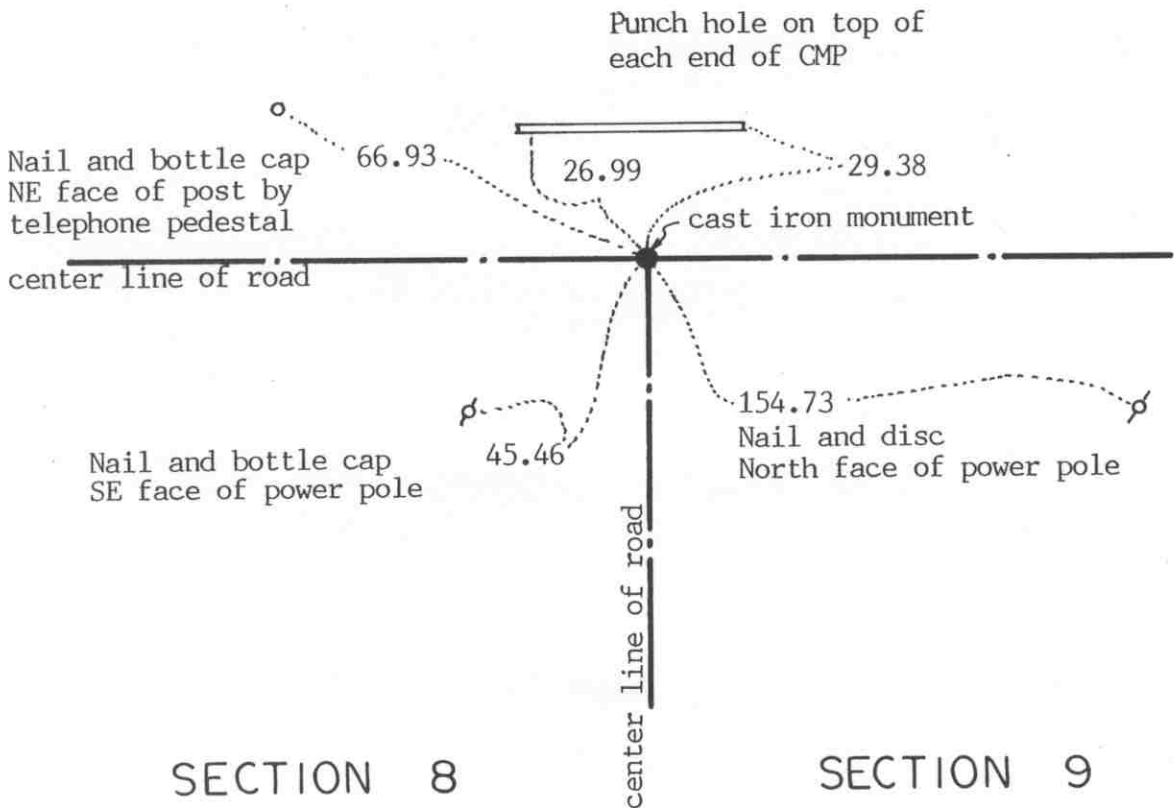
NORTHEAST corner, Section 8, Township 116 North, Range 28 West

Certificate of Location of Government Corner

SKETCH OF REFERENCE TIES
(NO SCALE)

SECTION 5

SECTION 4



SECTION 8

SECTION 9

Statement of evidence relative to this corner location on sheet 2

I hereby certify that this document was prepared by me or under my direct supervision.

Willard Pellinen

Willard Pellinen
McLeod County Surveyor
License No. 9626

Date Sept. 24, 1993

OFFICE OF THE COUNTY RECORDER
MCLEOD COUNTY, MINNESOTA.

I hereby certify that this document was filed in this office at 2 o'clock P.M. on the 5th day of Oct, 1993.

Carmen Estelle Mulder, County Recorder

By _____, Deputy

Document No. 255175

NORTHEAST _____ corner, Section 8, Township 116 North, Range 28 West

Certificate of Location of Government Corner

September, 1856. D. L. Langton of the General Land Office established this corner. He set a post and marked 3 aspens and a willow for bearing trees.

June 18, 1899. Survey notes by E. L. Higgins, county surveyor, show an iron pipe at the corner.

May 5, 1904. Higgins' notes show an iron corner.

August 22, 1973. Dickman Knutson, McLeod County Surveyor, replaced a found iron corner with a cast iron monument and took available reference ties.

The monument set by Knutson is accepted as marking the correct location of the section corner. It fits long standing occupation lines, the center line intersection of the roads, and it perpetuates the location of an older monument.

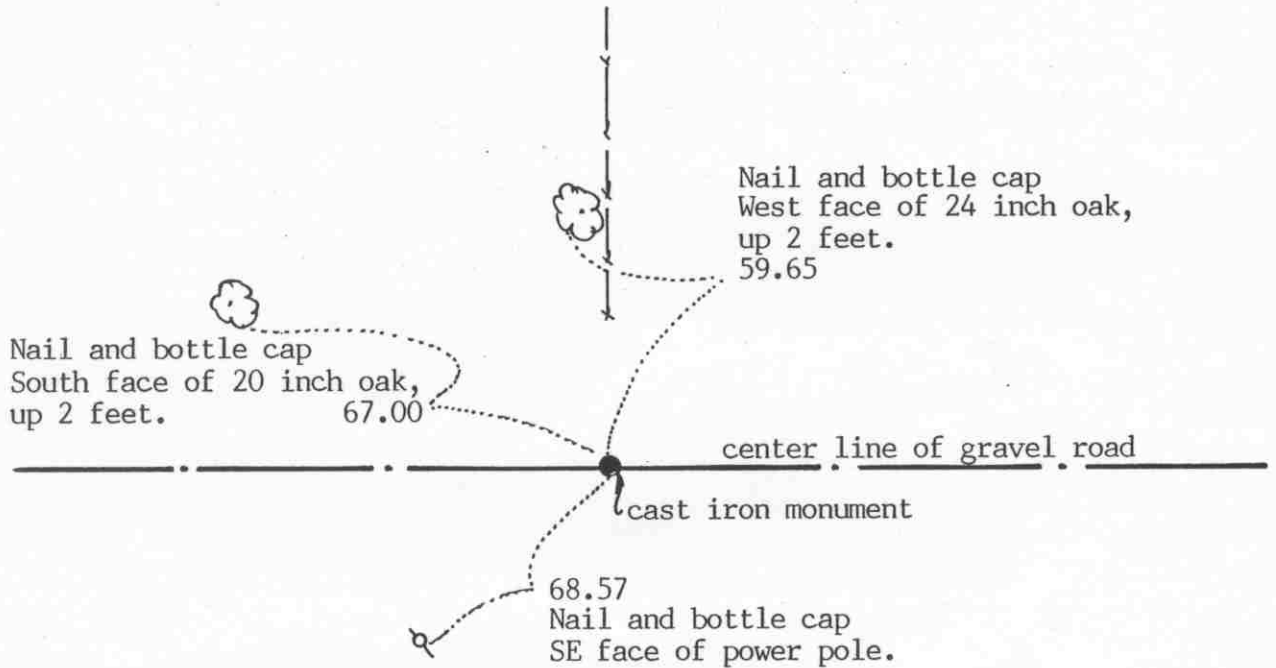
September 20, 1993. We found the monument in good condition and checked the reference ties.

NORTH QUARTER corner, Section 8, Township 116 North, Range 28 West

Certificate of Location of Government Corner

SKETCH OF REFERENCE TIES
(NO SCALE)

SECTION 5



SECTION 8

Statement of evidence relative to this corner location on sheet 2

I hereby certify that this document was prepared by me or under my direct supervision.

Willard Pellinen

Willard Pellinen
McLeod County Surveyor
License No. 9626

Date Sept. 28, 1993.

OFFICE OF THE COUNTY RECORDER
MCLEOD COUNTY, MINNESOTA.

I hereby certify that this document was filed in this office at 9 o'clock A.M. on the 14th day of October, 19 93.

Carmen Helie Mulder, County Recorder

By _____, Deputy

Document No. 255332

NORTH QUARTER corner, Section 8, Township 116 North, Range 28 West

Certificate of Location of Government Corner

September, 1856. E. N. Darling of the General Land Office established this corner. He set a post and marked an aspen and an oak for bearing trees.

June 18, 1899. Survey notes of E. L. Higgins, county surveyor, show a steel stake at the corner. He measured 2607 feet to the NW cor of section 8 and 2615 feet to the northeast corner of Section 8.

May 5, 1904. Survey notes by Higgins show a fence running south from the quarter corner.

June 9, 1939. Higgins found the remains of an old wood stake and the stump of an old witness tree. He put in a steel Ford axle.

May 10, 1972. Dickman Knutson, county surveyor, dug for the corner, John Tupa from Hutchinson with a backhoe. Down $2\frac{1}{2}$ feet below the road surface they found a round 12 inch diameter stone and below the stone they found a steel axle.

August 22, 1973. Knutson set a McLeod County cast iron monument over the axle and took available reference ties.

The monument set by Knutson is accepted as marking the location of the quarter corner. It fits long standing occupation lines and it perpetuates the location of an older monument.

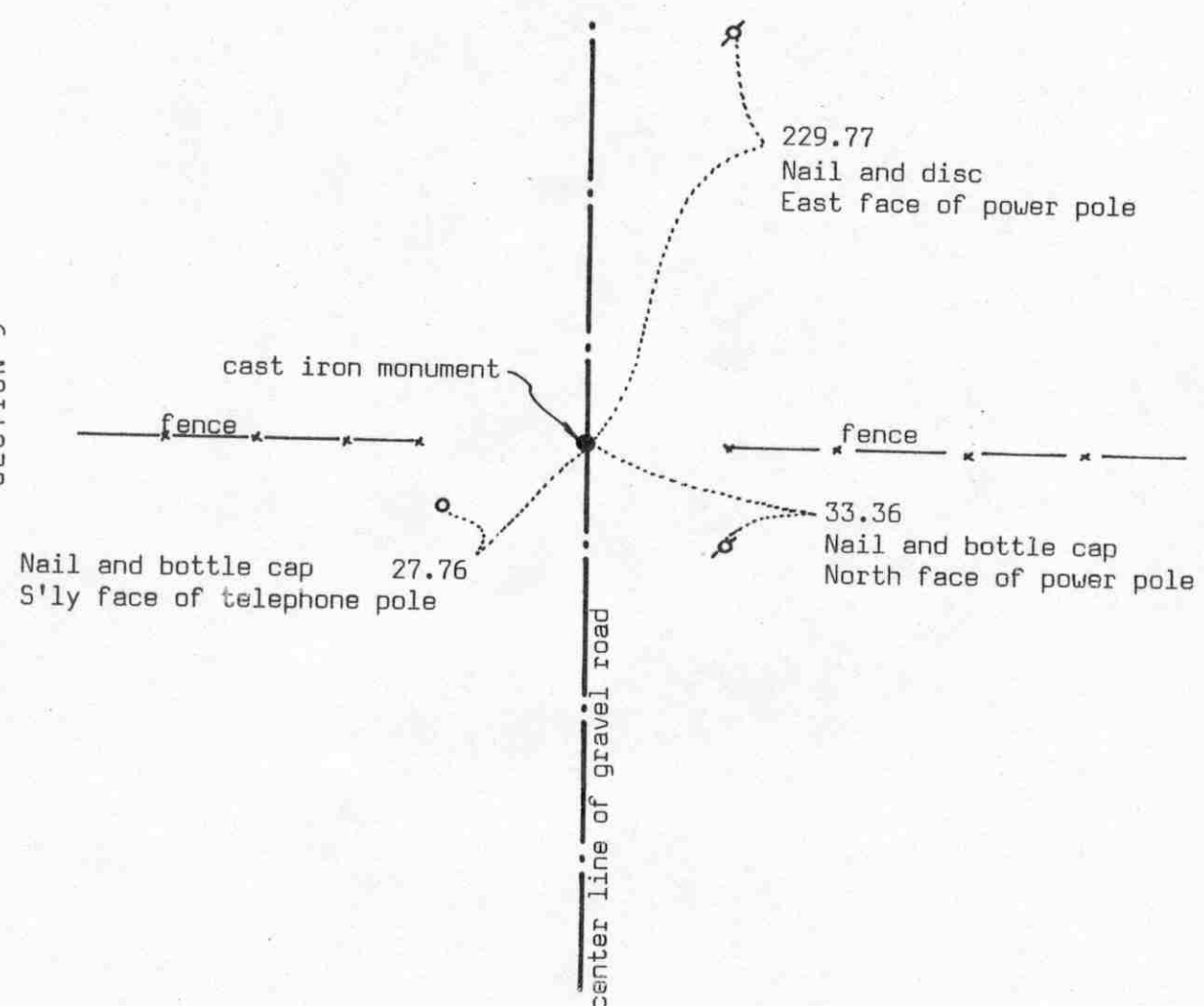
September 20, 1993. We found the monument in good condition down 6 inches below the surface of the gravel road. We took new available ties.

Certificate of Location of Government Corner

SKETCH OF REFERENCE TIES (NO SCALE)

SECTION 9

SECTION 10



Statement of evidence relative to this corner location on sheet 2

I hereby certify that this document was prepared by me or under my direct supervision.

Willard Pellinen
Willard Pellinen
McLeod County Surveyor
License No. 9626

Date July 7, 1990

OFFICE OF THE COUNTY RECORDER
MCLEOD COUNTY, MINNESOTA.

I hereby certify that this document was filed in this office at 9 o'clock A. M. on the 16th day of July, 19 90.

Carmen Helie, County Recorder

By _____, Deputy

Document No. 234406

EAST QUARTER corner, Section 9, Township 116 North, Range 28 West

Certificate of Location of Government Corner

September, 1856. This corner was established by E.L. Langton of the General Land Office. He set a post and had reference ties to 2 trees.

March 29, 1977. M. Maresh, 70 years old, and has lived in the Southwest Quarter of Section 10 for 55 years, said the center line of the road and in line with the fences east and west has been accepted as the correct quarter corner by the adjoining land owners. Harry Zumach, 67 years old, lived in the Southeast Quarter of Section 9 for 24 years and R. Miller, 55 years old, in the Northwest Quarter of Section 10 for 26 years, both agree with Mr. Maresh.

April 8, 1977. We set a temporary corner on the center line in line with the fences.

June 9, 1977. We dug for the corner at our temporary point, John Tupa from Hutchinson with a backhoe. We dug a hole 5 feet wide, 10 feet long and 3 feet deep (down to the original ground) but found nothing.

August 12, 1978. We set a $\frac{1}{2}$ inch diameter iron pipe at the center line of the road in line with the fences and took reference ties.

June 13, 1979. We replaced the iron pipe with a McLeod County cast iron monument.

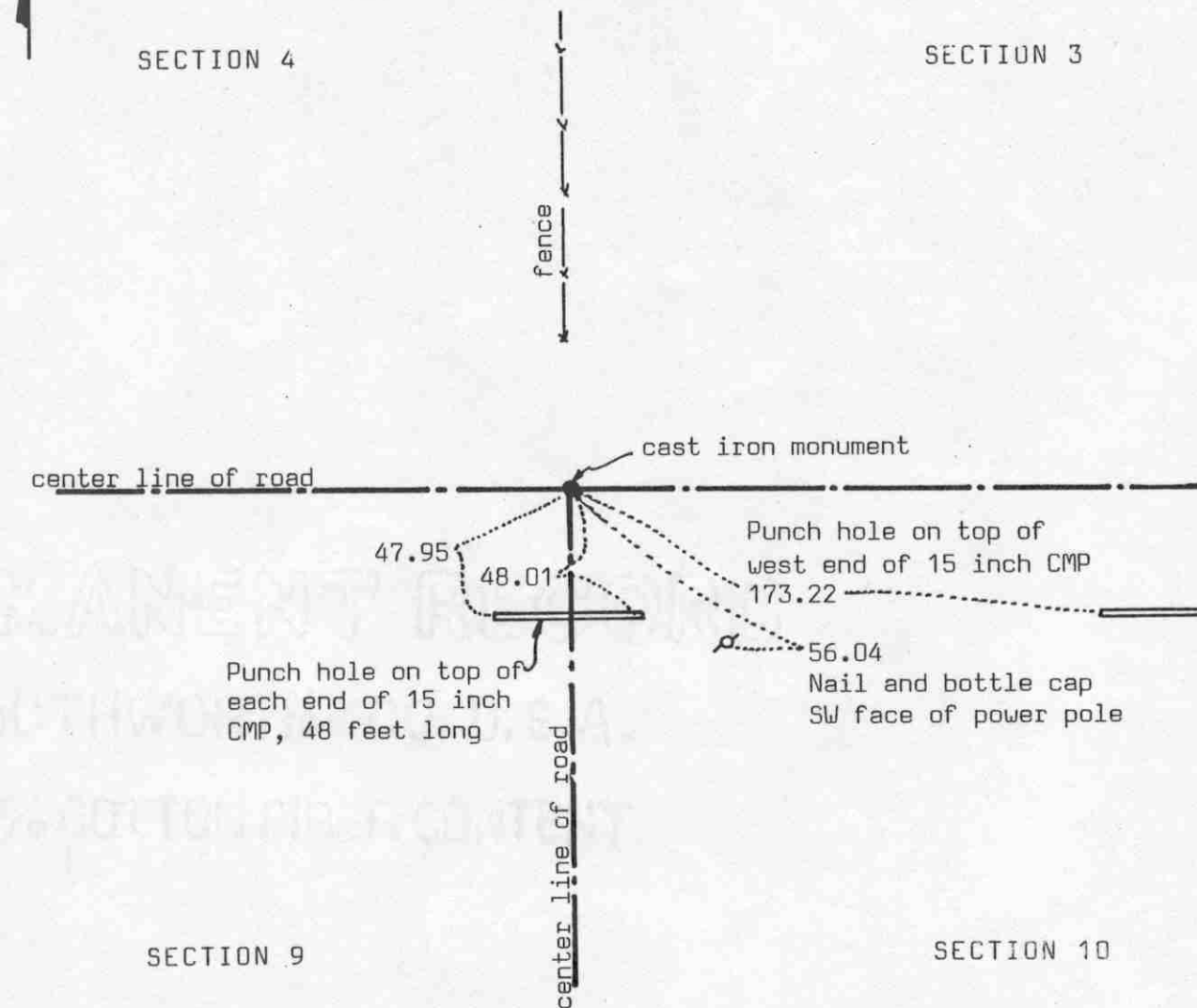
May 11, 1989. We found the monument in good condition and the reference ties good. We measured the east line of Section 9 and found that setting the corner by lost methods would have put the corner 1.87 feet south and 7.93 feet west of the monument.

We feel the center line of the road and the fences have perpetuated the correct location of the quarter corner.

Certificate of Location of Government Corner

SKETCH OF REFERENCE TIES

(NO SCALE)



Statement of evidence relative to this corner location on sheet 2

I hereby certify that this document was prepared by me or under my direct supervision.

Willard Pellinen
Willard Pellinen
McLeod County Surveyor
License No. 9626

Date July 7, 1990

OFFICE OF THE COUNTY RECORDER
MCLEOD COUNTY, MINNESOTA.

I hereby certify that this document was filed in this office at 9 o'clock A.M. on the 16th day of July, 1990.

Carmen Ostlie, County Recorder

By _____, Deputy

Document No. 234405

NORTHEAST corner, Section 9, Township 116 North, Range 28 West

Certificate of Location of Government Corner

September, 1856. This corner was originally set by the General Land Office. D.L.Langton set a post in a marsh and had reference ties to 3 trees.

January, 1972. Joe Shaur, 67 years old, has lived in the Southwest Quarter of Section 3 since 1947. He said the fence running north from the road intersection is on the west line of the Southwest Quarter.

May 10, 1972. McCombs Knutson Associates (Dickman Knutson, county surveyor) found an iron rod down 1 foot below the road surface.

August 23, 1975. Knutson dug below the iron rod and found a wood stake. They replaced the iron rod with a McLeod County cast iron monument and took reference ties. (They dug deeper with a backhoe but found nothing else)

April 14, 1977. Monument had been destroyed. Knutson set a spike at the corner.

April 5, 1978. Knutson reset a cast iron monument at the corner.

June 11, 1987. We found the monument had been destroyed by road construction. We reset a monument at the corner and took new reference ties.

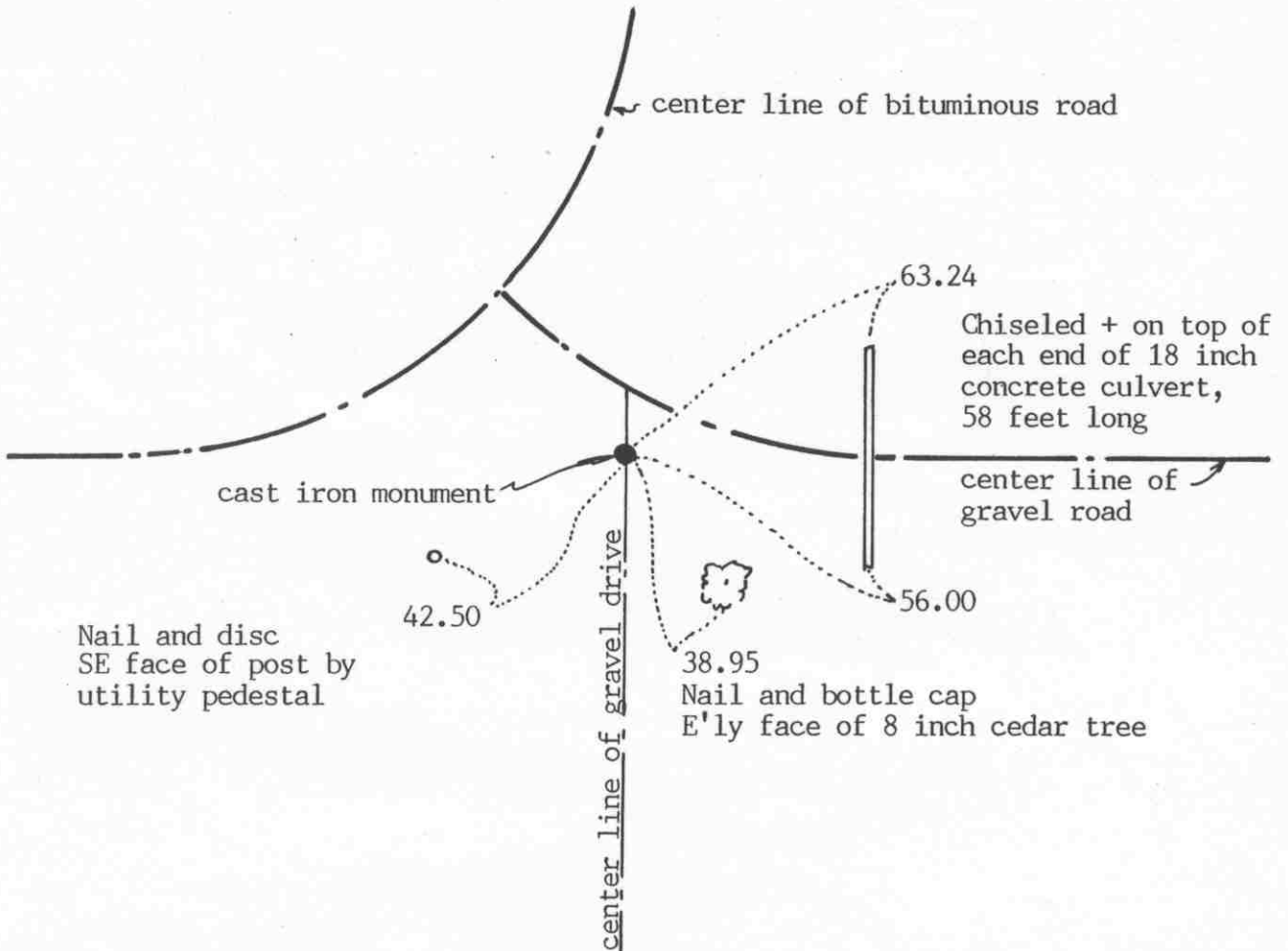
May 11, 1989. We found the monument in good condition and the reference ties good.

NORTH QUARTER corner, Section 9, Township 116 North, Range 28 West

Certificate of Location of Government Corner

SKETCH OF REFERENCE TIES
(NO SCALE)

SECTION 4



SECTION 9

Statement of evidence relative to this corner location on sheet 2

I hereby certify that this document was prepared by me or under my direct supervision.

Willard Pellinen
Willard Pellinen
McLeod County Surveyor
License No. 9626

Date August 18, 1993

OFFICE OF THE COUNTY RECORDER
MCLEOD COUNTY, MINNESOTA.

I hereby certify that this document was filed in this office at 2 o'clock P. M. on the 5th day of Oct, 1993.

Carmin Estelle Mulder, County Recorder

By _____, Deputy

Document No. 255176

NORTH QUARTER corner, Section 9, Township 116 North, Range 28 West

Certificate of Location of Government Corner

September, 1856. D. L. Langton of the General Land Office established this corner. He set a post and marked 2 aspens for bearing trees.

May 10, 1972. Dickman Knutson, McLeod County Surveyor, dug for the corner, John Tupa from Hutchinson with a backhoe. They dug a hole 8 feet wide, 16 feet long and 4 feet deep but found no evidence of the government corner.

December 14, 1972. Knutson set a McLeod County cast iron monument on the center line of the east-west road on the northerly extension of a fence to the south. This fence has been accepted by adjoining land owners as being on the north-south quarter line of Section 9. This monument falls 2.26 feet east and 0.53 feet south of a lost position for the corner.

June 11, 1987. The top of the monument had been broken off due to road construction. We found the bottom of the monument ok down 28 inches below the road surface. We took new reference ties and set a new cast iron monument over the old bottom.

The monument set by Knutson is accepted as marking the correct location of the quarter corner. It fits long standing occupation lines, the center line of the road and the fence to the south.

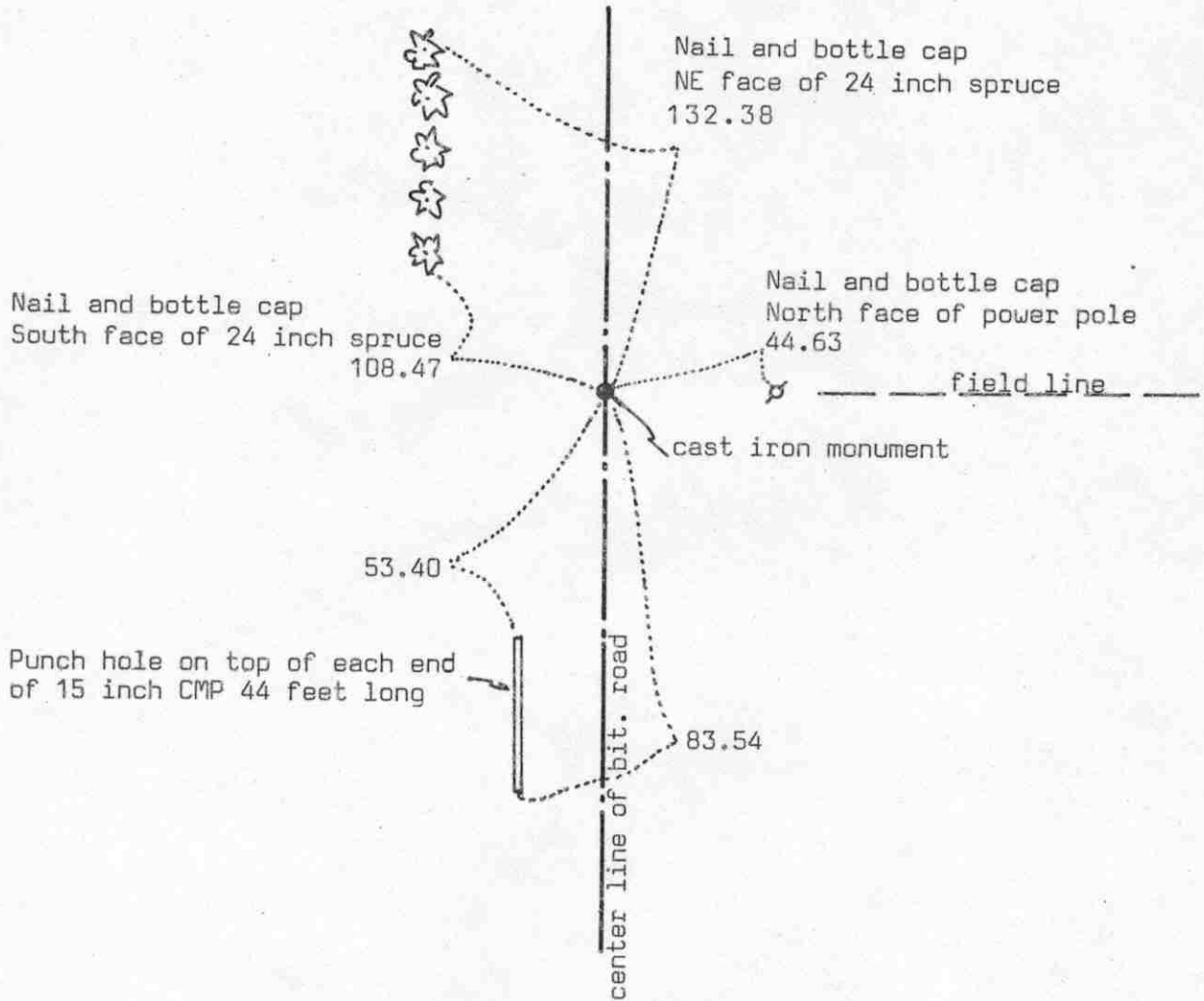
EAST QUARTER corner, Section 10, Township 116 North, Range 28 West

Certificate of Location of Government Corner

SKETCH OF REFERENCE TIES
(NO SCALE)

SECTION 10

SECTION 11



Statement of evidence relative to this corner location on sheet 2

I hereby certify that this document was prepared by me or under my direct supervision.

Willard Pellinen
Willard Pellinen
McLeod County Surveyor
License No. 9626

Date July 5, 1990

OFFICE OF THE COUNTY RECORDER
MCLEOD COUNTY, MINNESOTA.

I hereby certify that this document was filed in this office at 9 o'clock A.M. on the 16th day of July, 1990.

Carmen Ostlie, County Recorder

By _____, Deputy

Document No. 234408

EAST QUARTER corner, Section 10, Township 116 North, Range 28 West

Certificate of Location of Government Corner

This corner was originally set by the government in September, 1856. D.L.Langton set a post and had ties to 2 bearing trees.

1938. County Highway Department field notes show an iron pin at the corner. They had a distance of 2649 feet to the northeast corner and a distance of 2626 feet to the southeast corner of Section 10.

April 7, 1977. We found a spike and bottle cap on the center line of the road in line with a field line running east.

June 1, 1978. We dug for the corner, John Tupa from Hutchinson with a backhoe. Down 3 feet below the road surface we found a 1 inch diameter iron pin. We took reference ties.

July 15, 1980. We set a McLeod County cast iron monument using the 1978 reference ties.

May 11, 1989. We found the cast iron monument in good condition, took some additional ties. We measured the east line of Section 10 and found the monument to be about 10 feet south of being half way between the section corners and about 3 feet west of being on a straight line.

We feel the monument we found is the same iron pin shown in the 1938 highway notes and that it had perpetuated the correct location of the quarter corner.

NORTHEAST corner, Section 10, Township 116 North, Range 28 West

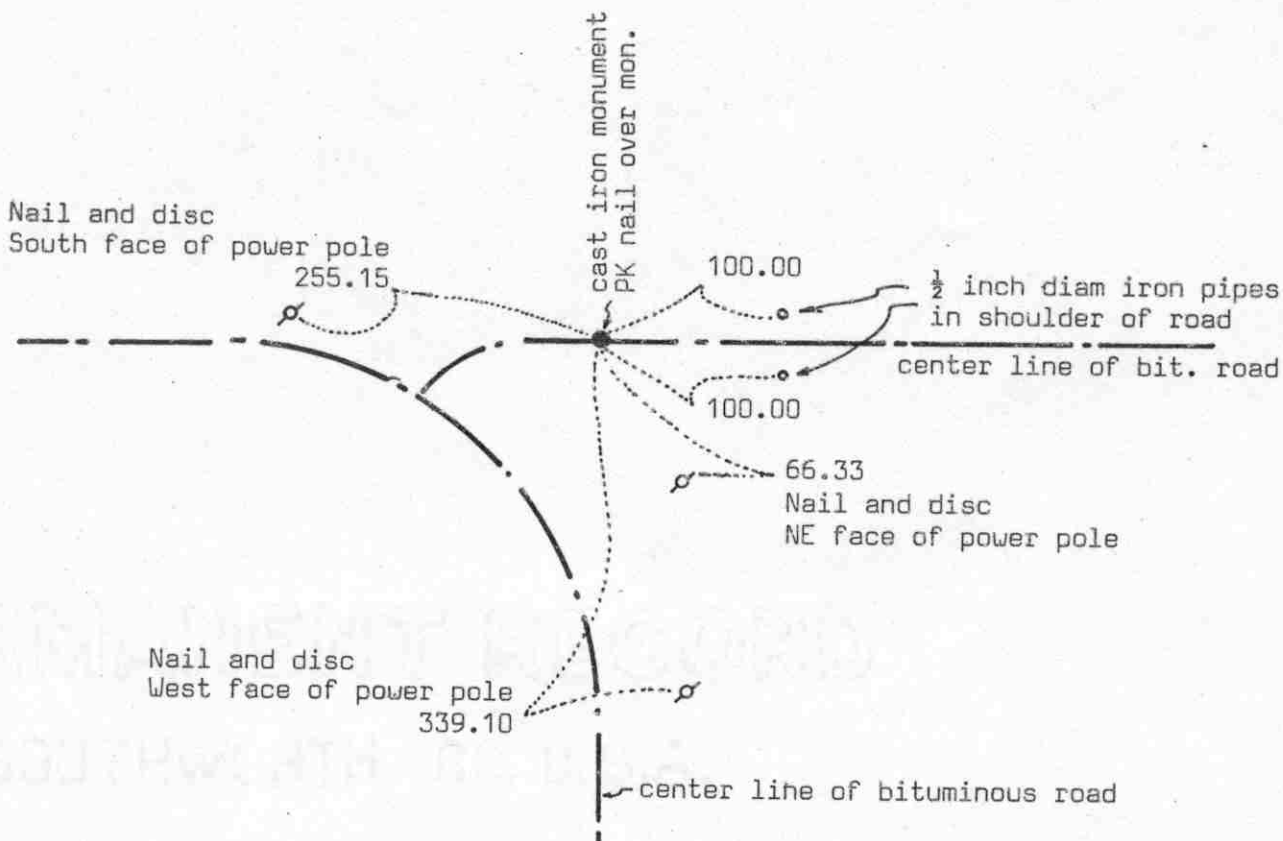
Certificate of Location of Government Corner

SKETCH OF REFERENCE TIES
(NO SCALE)



SECTION 3

SECTION 2



SECTION 10

SECTION 11

Statement of evidence relative to this corner location on sheet 2

I hereby certify that this document was prepared by me or under my direct supervision.

Willard Pellinen
Willard Pellinen
McLeod County Surveyor
License No. 9626

Date July 4, 1990

OFFICE OF THE COUNTY RECORDER
MCLEOD COUNTY, MINNESOTA.

I hereby certify that this document was filed in this office at 9 o'clock A.M. on the 16th day of July, 1990.

Carmen O'Brien, County Recorder

By _____, Deputy

Document No. 234407

NORTHEAST corner, Section 10, Township 116 North, Range 28 West

Certificate of Location of Government Corner

September, 1856. D.L.Langton of the General Land Office established this corner. He set a post and had reference ties to 4 bearing trees.

1938. County Highway Department field notes show a wood hub over a stone at the corner.

October, 1951. Old county surveyor book shows a distance of 2635.25 feet to the north quarter corner of Section 10. Doesn't show what, if anything was found at the corner.

January, 1972. McCombs Knutson Associates, Dickman Knutson, county surveyor, talked with Lawrence Eischens, 45 years old, who had lived in the Southeast Quarter of Section 3 all his life. He said the center line intersection of the roads is the correct corner. Knutson set a temporary corner at the center line intersection.

May 10, 1972. Knutson dug for the corner, John Tupa from Hutchinson with a backhoe. Down 6 feet below the road surface they found a stone with a rotted wood hub over it. The stone was 15 inches long, 8 inches in diameter and was set on end. They took reference ties.

August 23, 1973. Knutson set a McLeod County cast iron monument at the corner.

May 11, 1989. We found a PK nail on the surface of the bituminous. The reference ties checked good and we took additional ties. We measured 2637.24 feet to the north quarter corner of Section 10.

We accept the stone found by Knutson as having perpetuated the correct location of the section corner.

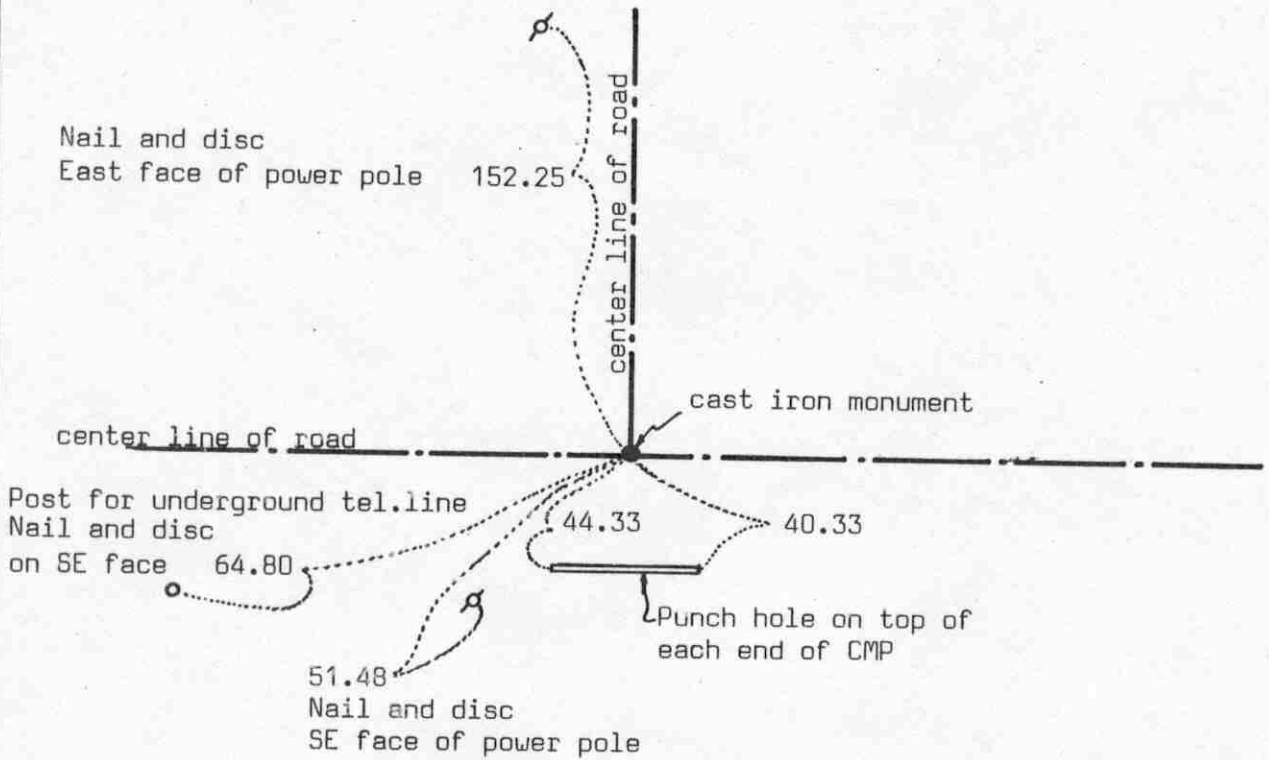
NORTH QUARTER corner, Section 10, Township 116 North, Range 28 West

Certificate of Location of Government Corner

SKETCH OF REFERENCE TIES (NO SCALE)



SECTION 3



SECTION 10

Statement of evidence relative to this corner location on sheet 2

I hereby certify that this document was prepared by me or under my direct supervision.

Willard Pellinen
Willard Pellinen
McLeod County Surveyor
License No. 9626

Date July 7, 1990

OFFICE OF THE COUNTY RECORDER
MCLEOD COUNTY, MINNESOTA.

I hereby certify that this document was filed in this office at 9 o'clock A. M. on the 16th day of July, 1990.

Barbara Ostlie, County Recorder

By _____, Deputy

Document No. 234409

Certificate of Location of Government Corner

September, 1856. This corner was established by the General Land Office. D.L.Langton set a post and had reference ties to 2 bearing trees.

1944. The McLeod County Highway Department found a hub at the corner.

January 24, 1972. McCombs Knutson Associates (Dickman Knutson, county surveyor) set a temporary corner at the center line intersection of roads running north, east and west.

May 10, 1972. Knutson dug for the corner (John Tupa from Hutchinson, with a backhoe). They found a wood hub, top of hub down 1 foot below the road surface. Below the hub they found a 6 inch diameter stone, 12 inches long, set on end. They took available reference ties.

August 23, 1973. Knutson set a McLeod County cast iron monument at the corner.

May 5, 1977. We reset a cast iron monument at the corner, the old monument had been destroyed by road construction. 1973 reference ties were good.

May 11, 1989. We found the monument and the reference ties good. We measured the north line of Section 10 and found the corner to be 4.05 feet west of a split between the section corners and 0.05 feet north of a straight line between the section corners.

We feel the stone and wood hub found by Knutson had perpetuated the correct location of the quarter corner.

EAST QUARTER corner, Section 11, Township 116 North, Range 28 West

Certificate of Location of Government Corner

SKETCH OF REFERENCE TIES (NO SCALE)

SECTION 11

SECTION 12



BRICK BUILDING
Old school house

61.70

cast iron monument

center line of gravel road

Nail and bottle cap
E'ly face of tel. pole
52.90

31.80
Nail and bottle cap
SW face of power pole

center line of gravel road

Statement of evidence relative to this corner location on sheet 2

I hereby certify that this document was prepared by me or under my direct supervision.

Willard Pellinen

Willard Pellinen
McLeod County Surveyor
License No. 9626

Date Sept. 28, 1993

OFFICE OF THE COUNTY RECORDER
MCLEOD COUNTY, MINNESOTA.

I hereby certify that this document was filed in this office at 9 o'clock A.M. on the 14th day of October, 1993.

Carmen Helie Mulder, County Recorder

By _____, Deputy

Document No. 255333

EAST QUARTER corner, Section 11, Township 116 North, Range 28 West

Certificate of Location of Government Corner

September, 1856. This corner was established by D. L. Langton of the General Land Office. He set a post and marked 2 aspens for bearing trees.

April 11, 1977. Dickman Knutson, county surveyor, set a temporary corner at the center line intersection of the roads. Mr. George Ardolf, 41 years old and had lived in the Southwest Quarter of Section 12 all his life, stated the corner is in the center line intersection of roads north-south-east-west.

June 28, 1977. Knutson dug for the corner, John Tupa from Hutchinson with a backhoe. They dug a hole 12 feet by 4 feet by 4½ feet deep but found no evidence of the government corner, but they broke a telephone line running diagonally across the intersection.

July 7, 1977. Knutson set a spike at the intersection and took available reference ties.

April 10, 1978. Knutson set a McLeod County cast iron monument at the corner.

The monument set by Knutson is accepted as marking the correct location of the quarter corner. It fits long standing occupation lines. (the center lines of the roads)

September 20, 1993. We found the monument in good condition and checked the reference ties.

NORTHEAST corner, Section 11, Township 116 North, Range 28 West

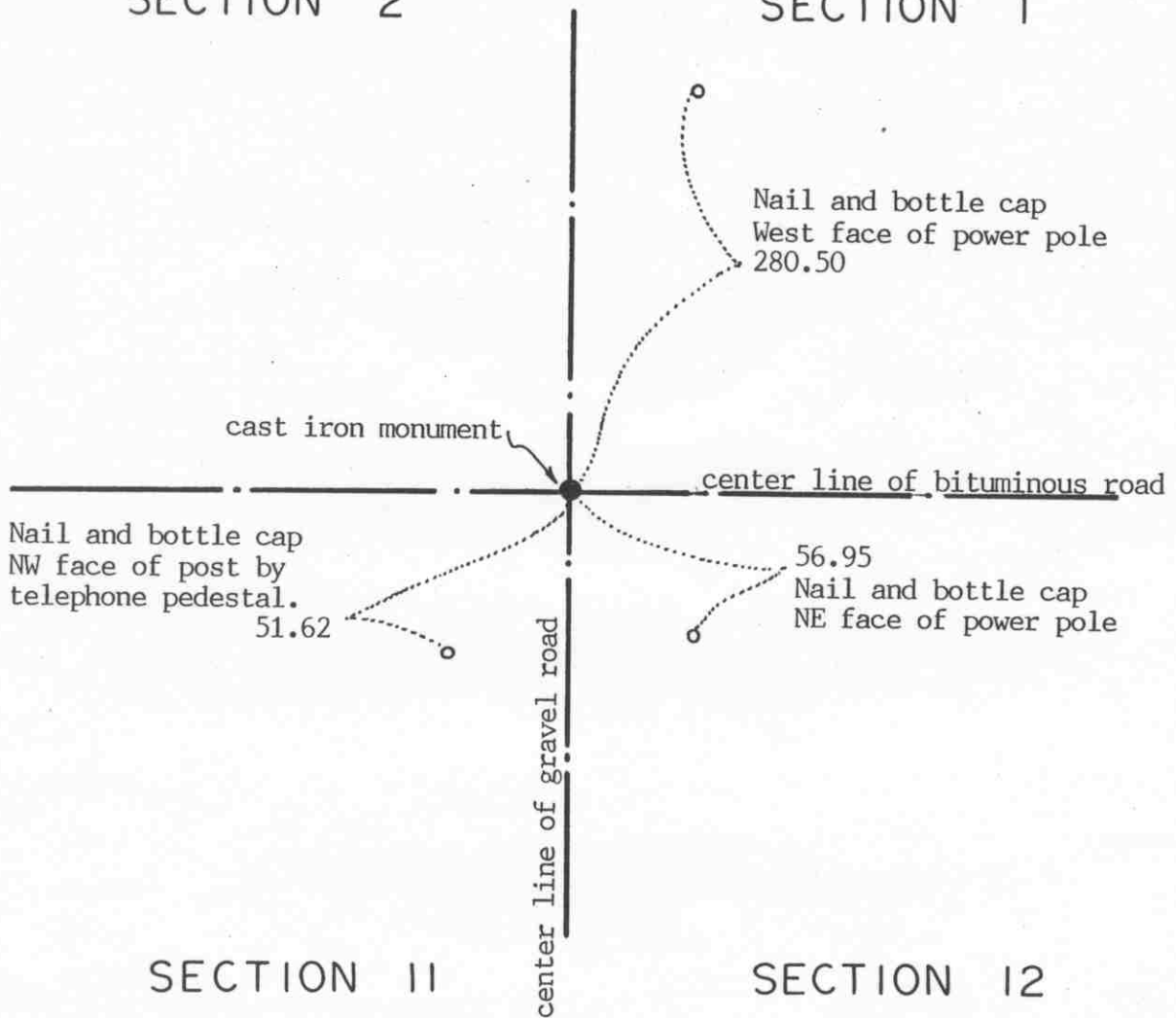
Certificate of Location of Government Corner

SKETCH OF REFERENCE TIES
(NO SCALE)



SECTION 2

SECTION 1



SECTION 11

SECTION 12

Statement of evidence relative to this corner location on sheet 2

I hereby certify that this document was prepared by me or under my direct supervision.

Willard Pellinen

Willard Pellinen
McLeod County Surveyor
License No. 9626

Date Sept. 27, 1993.

OFFICE OF THE COUNTY RECORDER
MCLEOD COUNTY, MINNESOTA.

I hereby certify that this document was filed in this office at 2 o'clock P.M. on the 5th day of Oct, 1993.

Carmen Estelle Mulder, County Recorder

By _____, Deputy

Document No. 255177

NORTHEAST corner, Section 11, Township 116 North, Range 28 West

Certificate of Location of Government Corner

September, 1856. This corner was originally established by D. L. Langton of the General Land Office. He set a post in a wet marsh and marked 3 aspens and an elm for bearing trees.

February 14, 1985. We measured the north line of sections 11 and 12 and set this corner on a proration of old county highway department distances. The corner is on the center line intersection of roads north, south, east and west. We took available reference ties. We set a spike.

July 11, 1985. We replaced the spike with a McLeod County cast iron monument.

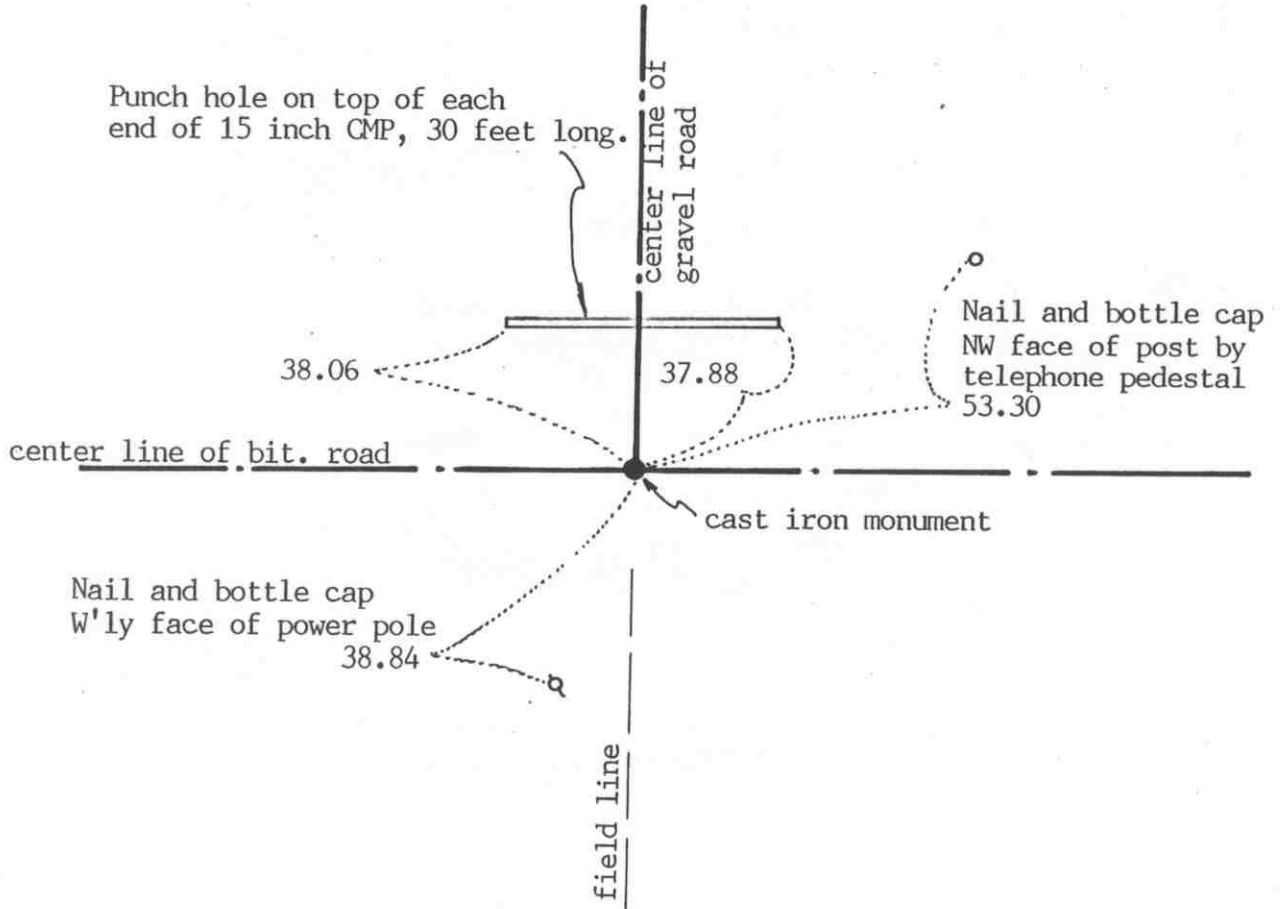
September 20, 1993. We found the monument in good condition and checked the reference ties.

NORTH QUARTER corner, Section 11, Township 116 North, Range 28 West

Certificate of Location of Government Corner

SKETCH OF REFERENCE TIES
(NO SCALE)

SECTION 2



SECTION 11

Statement of evidence relative to this corner location on sheet 2

I hereby certify that this document was prepared by me or under my direct supervision.

Willard Pellinen
Willard Pellinen
McLeod County Surveyor
License No. 9626

Date Sept. 27, 1993

OFFICE OF THE COUNTY RECORDER
MCLEOD COUNTY, MINNESOTA.

I hereby certify that this document was filed in this office at 2 o'clock P.M. on the 5th day of Oct, 1993.

Armen K. K. K. K., County Recorder

By _____, Deputy

Document No. 255178

NORTH QUARTER corner, Section 11, Township 116 North, Range 28 West

Certificate of Location of Government Corner

September, 1856. D.L.Langton of the General Land Office established this corner. He set a post and marked 2 aspens for bearing trees.

March 30, 1977. Joe Hlavka, 88 years old, had lived in the Northeast Quarter of Section 11 for 30 years, said the center line intersection, roads east, west and north, is the quarter corner. Also the field line running south is on the north-south quarter line of Section 11.

April 11, 1977. Dickman Knutson, county surveyor, set a railroad spike at the center line intersection and took reference ties.

January 31, 1985. We measured the north line of Section 11 and set the north quarter corner on a proration of old county highway distances. Corner fell at the center line intersection of the roads, as set by Knutson.

July 11, 1985. We set a McLeod County cast iron monument at the corner.

September 20, 1993. We found the monument in good condition and checked the reference ties.

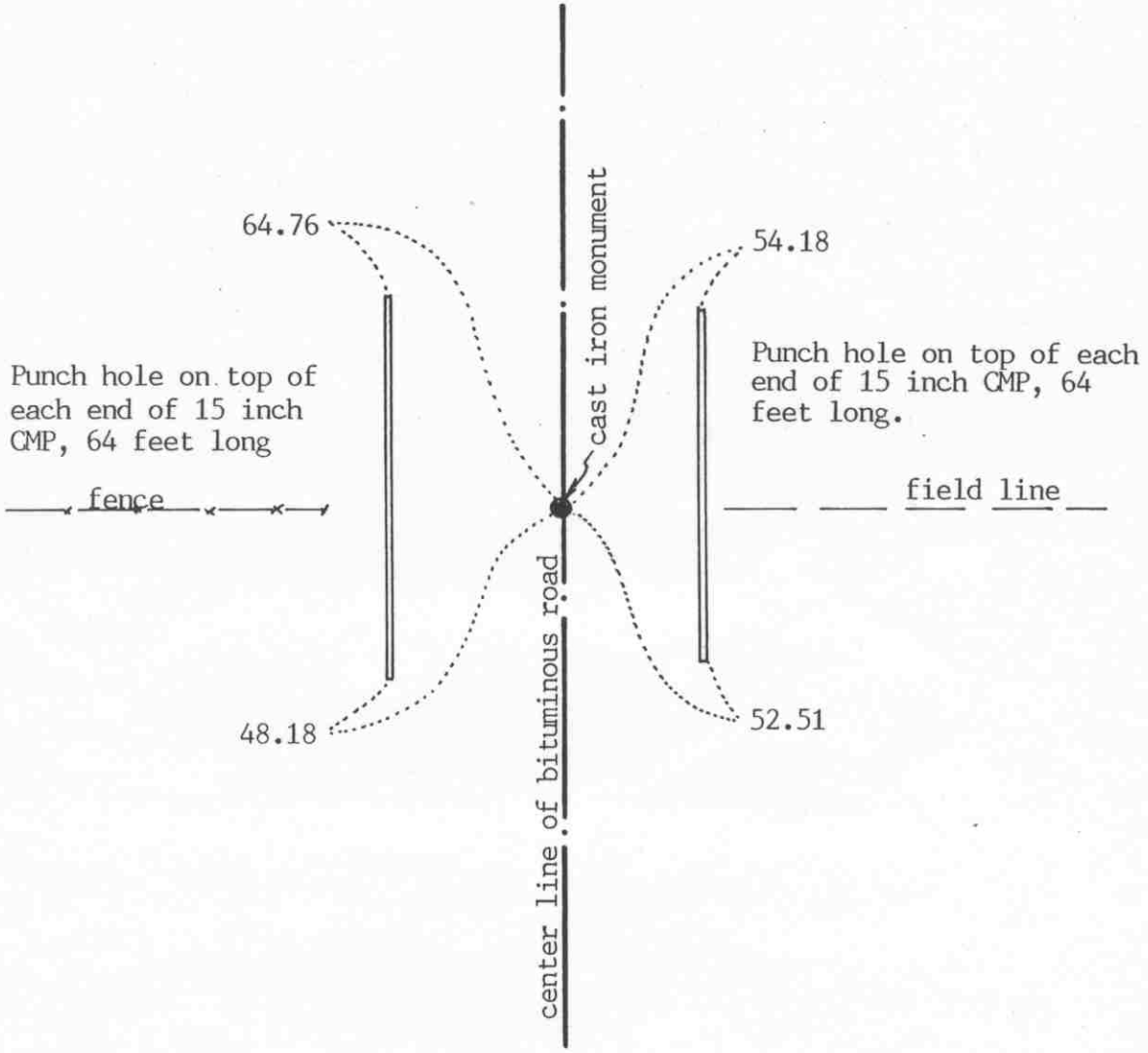
EAST QUARTER corner, Section 12, Township 116 North, Range 28 West

Certificate of Location of Government Corner

SKETCH OF REFERENCE TIES (NO SCALE)

SECTION 12 T.116 N. R.28 W.

SECTION 7 T.116 N., R.27 W.



Statement of evidence relative to this corner location on sheet 2

I hereby certify that this document was prepared by me or under my direct supervision.

Willard Pellinen
Willard Pellinen
McLeod County Surveyor
License No. 9626

Date Sept. 29, 1993.

OFFICE OF THE COUNTY RECORDER
MCLEOD COUNTY, MINNESOTA.

I hereby certify that this document was filed in this office at 9 o'clock A. M. on the 14th day of October, 19 93.

Carmen Belie Mulder, County Recorder

By _____, Deputy

Document No. 255334

EAST QUARTER corner, Section 12, Township 116 North, Range 28 West

Certificate of Location of Government Corner

1855. John Ryan of the General Land Office established this corner. He set a post and marked 2 oaks, an elm and an ash for bearing trees.

December, 1968. Dickman Knutson, county surveyor, set a spike at the center line of the north-south road, in line with fences to the east and west. Adjoining land owners testified this was the location of the quarter corner.

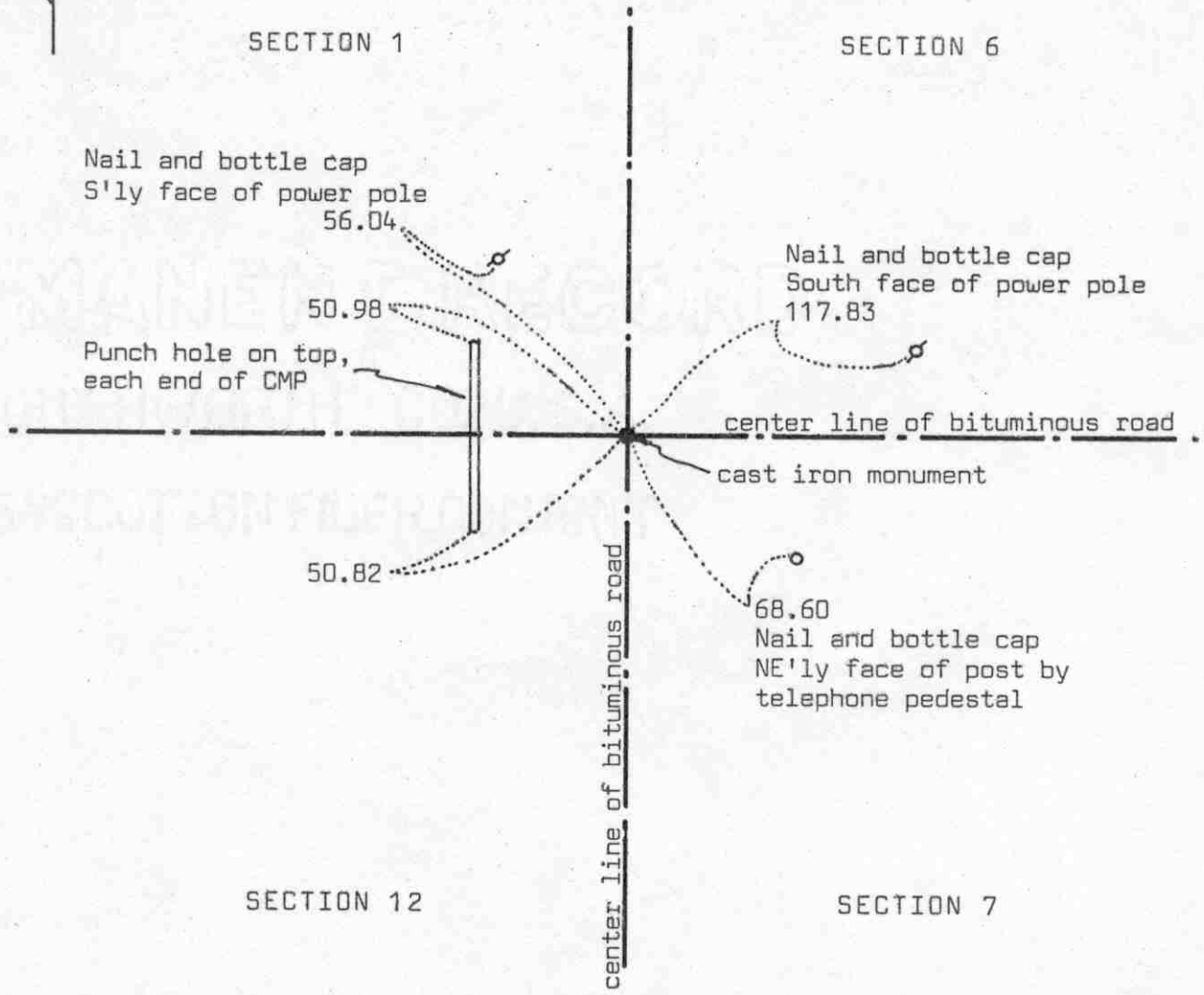
1969. Knutson dug for the corner, John Tupa from Hutchinson with a backhoe. They found no evidence of the government corner. Knutson set a cast iron monument and took ties.

November 30, 1990. We measured the east line of Section 12 and found the monument in good condition. We found the corner to be 5.03 feet south and 1.08 feet west of a lost position for the corner.

September 20, 1993. We found no ties remaining to the corner. We dug and found the top of the monument (removeable top) gone. The monument otherwise was in good condition. We took new available reference ties.

Certificate of Location of Government Corner

SKETCH OF REFERENCE TIES
(NO SCALE)



Statement of evidence relative to this corner location on sheet 2

I hereby certify that this document was prepared by me or under my direct supervision.

Willard Pellinen
Willard Pellinen
McLeod County Surveyor
License No. 9626

Date 2/10/90

OFFICE OF THE COUNTY RECORDER
MCLEOD COUNTY, MINNESOTA.

I hereby certify that this document was filed in this office at 3 o'clock P.M. on the 27th day of Feb, 1990.

Carmen Dotlie, County Recorder

By _____, Deputy

Document No. 232084

Certificate of Location of Government Corner

This corner was originally set in 1855 by the General Land Office. John Ryan set a post, corner to Sections 1, 6, 7 and 12, and had reference ties to 4 bearing trees.

December, 1968. McCombs Knutson Associates (Dickman Knutson, county surveyor) set a temporary corner on the center line center line intersection of the roads.

May, 1969. Knutson found an iron pin down below the road surface and replaced it with a McLeod County cast iron monument and took reference ties.

July 23, 1987. We found no reference ties remaining, but found the cast iron monument in good condition. We took new reference ties.

March 8, 1989. We found the monument in good condition and the reference ties good.

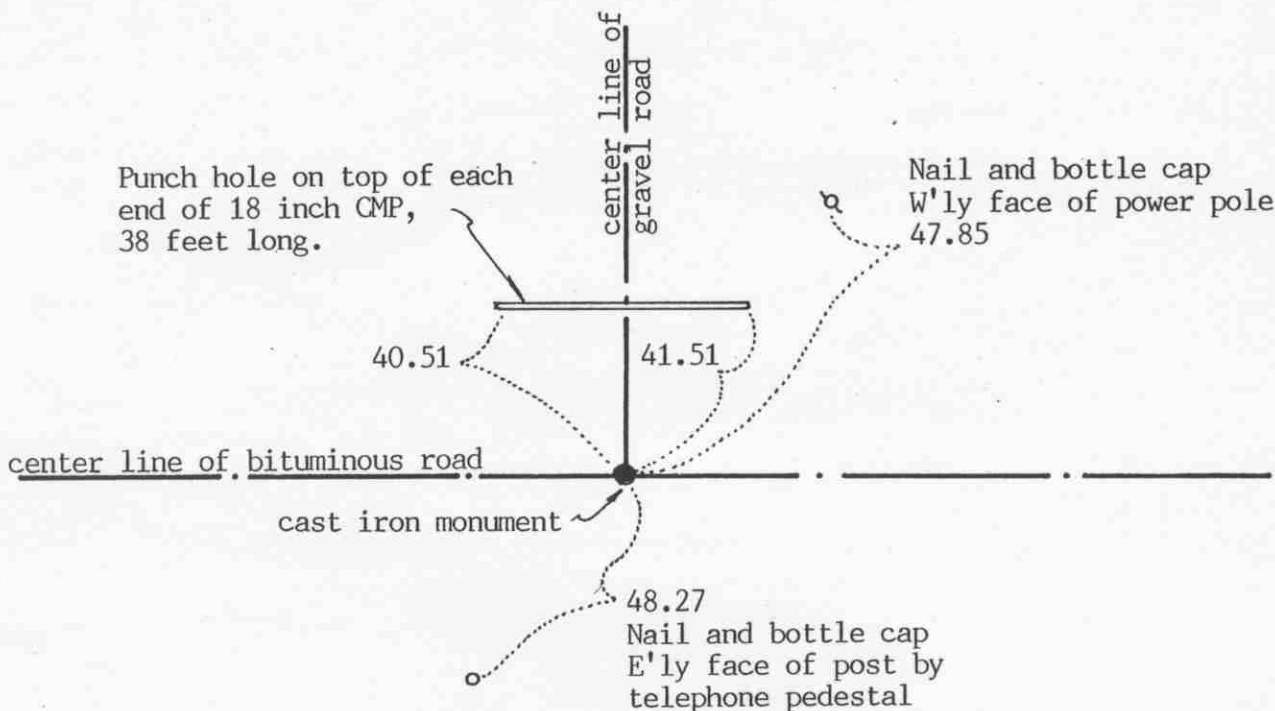
NORTH QUARTER corner, Section 12, Township 116 North, Range 28 West

Certificate of Location of Government Corner

SKETCH OF REFERENCE TIES

(NO SCALE)

SECTION 1



SECTION 12

Statement of evidence relative to this corner location on sheet 2

I hereby certify that this document was prepared by me or under my direct supervision.

Willard Pellinen

Willard Pellinen
McLeod County Surveyor
License No. 9626

Date Sept. 28, 1993

OFFICE OF THE COUNTY RECORDER
MCLEOD COUNTY, MINNESOTA.

I hereby certify that this document was filed in this office at 2 o'clock P. M. on the 5th day of Oct, 1993.

Armen Otis Mulder, County Recorder

By _____, Deputy

Document No. 255179

NORTH QUARTER corner, Section 12, Township 116 North, Range 28 West

Certificate of Location of Government Corner

September, 1856. D.L.Langton of the General Land Office established this corner. He set a post and marked an elm an a linden tree for bearing trees.

March 30, 1977. Mary Lhotka, 65 years old and had lived in the Southwest Quarter of Section 1 since 1930 said the center line of the drive to the north is along the north-south quarter line of Section 1. The fence along the east side of the road should be on the east line of the west 1 rod of the Southeast Quarter.

April 11, 1977. Dickman Knutson, county surveyor, set a spike on the center line of the east-west road $16\frac{1}{2}$ feet west of the southerly extension of the fence.

February 14, 1985. We measured the north line of Section 12 and set the quarter corner on a proration of old county highway department distances. The corner falls approximately $16\frac{1}{2}$ feet west of the fence as per testimony by Mrs Lhotka. We took available reference ties.

July 11, 1985. We set a McLeod County cast iron monument at the corner.

September 20, 1993. We found the monument in good condition and checked the reference ties.